

Citrus Ridge Decorative Artists

An affiliated chapter of the
Society of Decorative Painters

www.citrusridge.org



December, 2012

Vol IV—Art 12

2012 Board Members

PRESIDENT

Vicki Alley, TDA
.....

1st VICE PRESIDENT

(programs)

Cheryl Bryant
.....

2nd VICE PRESIDENT

(membership)

Michelle Mueller
.....

SECRETARY

LaMoyne Meek
.....

TREASURER

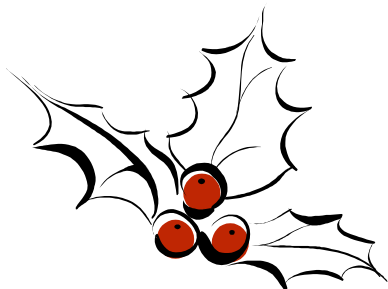
Deanna Spence
.....

WAYS AND MEANS

Suzie Mills
.....

NEWSLETTER EDITOR

Carol Brown



President's Message

I hope everyone had a safe and Happy Thanksgiving!!

We voted in the new Executive Board at the last meeting and I am confident Suzi Mills and the new board will lead us through another great year! It has truly been my honor to be your President during 2012. We have all learned so much from each other and the instructors we had during this year. I am so blessed to be a part of this wonderful group. We already have some terrific classes planned for this year and I know Michelle Mueller will fill the rest of the year up with some great classes and projects!

Please keep in mind how you will be able to help the chapter this coming year. Remember what Hillary said: "It takes a Village..."

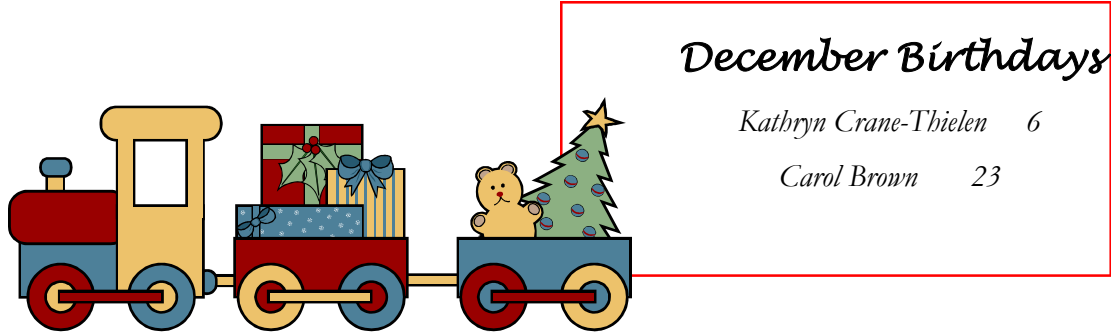
I hope you had a chance to look at the projects we will be doing in January with Marjorie Harris Clark and in February with Janelle Johnson. The class fees are very reasonable for both artists, but we have a deadline to sign up for the classes. The deadline to sign up for Marjorie's class is December 20th and Janelle's is January 15th. Please either email me or call me and let me know if you will be signing up for these projects. Remember, Janelle's is a 2 days seminar, you can sign up for one or both days.

As you will read in this newsletter, at the last meeting the chapter also voted on and approved a new meeting place for our monthly meeting. **From now on we will be holding our regular meetings at the Water's Edge facility in Lake Wales.** We will meet there every month for the low fee of \$50.00 per month.

Again, it has been my pleasure to serve as your President in 2012 and I am looking forward to turning the gavel over to Suzi Mills and I know you will give her and the new Executive Board all the support they need!!

Keep a clean brush!

Vicki



Marjorie Harris Clark
"Any Messages for Me?"

Supply List:

Surface: 11 x 14" stretched canvas.

Paint: Will be supplied for class use only

By Folk Art Paints.

Pure Black 479, Yellow Ochre 917, Wicker White 901, Baby Blue 442, Dioxazine Purple 463, Azure Blue 643, Burnt Sienna 493, Violet Pansy 440, Raw Umber 485, Yellow Light 918, Red Light 629 Flesh Tone, 460, Tangerine 627, Folk Art Satin Varnish 792 & Folk Art Blending Gel 867

Brushes: Good quality brushes

Angular Shaders 3/4 & 1/2", Rounds # 1 and 4, Small blending brush. (These brushes are available on my website.)

Large tracing paper to transfer pattern to surface.

Disposable Paper Pallet/Strathmore or other/for blending.

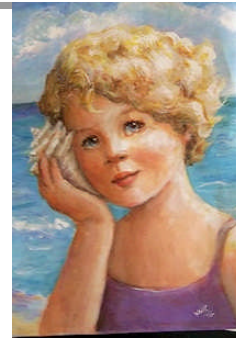
Chaco Paper (Blue) transfer paper (only this brand, it's not messy). Paper towels. Also important, you will need sharp little scissors to cut out part of the pattern.



2013 Programs and Seminars

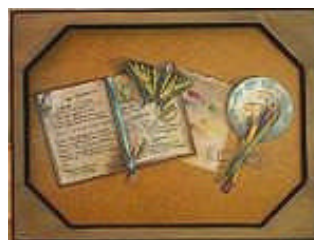
January

26: Program: **Marjorie Harris Clark**, Acrylics, "Any messages for me?" , \$25 members, \$35 guests



February

23 and 24: Seminar: **Janelle Johnson**, Colored Pencil, Day 1—Orchids and Bamboo/ Day 2—Tiger Swallowtail, \$25 members, \$35 guests



March

23: Program: Kathryn Crane-Thielan , Heat set oils

April

27: Basket Luncheon

May

23: Seminar: Sherry Nelson, Oils



Beginner's class – May 31,
Bridled Titmouse

Intermediate class – June 1. Greenish
Blue with Wild Marigolds



Advanced class – June 2,
Rufous Hummingbird

Membership

So far, eighteen have paid for 2013. Please remember to pay BEFORE the January program. We wouldn't want to turn you away!! Just kidding. Either mail your dues to me - 925 Point Way, Lakeland 33813 or to LaMoyne after the first of the year or Bring your money in January in an envelop marked 2013 dues and your name on the outside. Thanks

Michelle Mueller

Basket Luncheon

So far we have eleven people signed up to do ten tables. We will have it even if no more sign up to do tables. Our theme for the year should be K.I.S.S.- you know "Keep it Simple *****." If you are going to do a table or want to help out in some way, please let me know. Without everyone's help, it just isn't the same!!

Michelle Mueller

About Programs

What medium(s) do you prefer and what types of projects? Would you do a project that stretched out over two months? Email me and let me know.

Michelle Mueller

I would like to thank the chapter for the sympathy card I received when my mother passed away. This has really been a difficult year for me and I really appreciated the card!

Vicki Alley



******Change of Venue for Janelle Johnson*

*February Seminar******

Due to availability, we will be holding Janelle's two day seminar at the tourist Club in Lake Wales. The Water's Edge facility holds a church service on Sunday afternoons in the room we would be using so it would be unavailable for us to use.

Minutes, Saturday, November 24, 2012

Water's Edge, Lake Wales

President, Vicki Alley opened the business meeting at 10:00 a.m. with 10 members present. Guests were Margie Schramm, Bonnie Burger and Gail Kautz.

The Secretary's report was not available. It will be printed in the next newsletter.

The Treasurer's report published in the last newsletter was approved to be filed.

A discussion was held regarding obtaining a meeting place for the May, Sherry Nelson, seminar. Different places are being looked into.

A discussion was held regarding the change in the "standing rules" to hold the election of officers (now held in November) *which is traditionally low in attendance* to another date in the fall. The proposal of changes will be made known to members in the next two newsletters to enable members to understand the proposal before voting at a designated business meeting.

UNFINISHED BUSINESS: Basket luncheon: Chairperson, Michelle Mueller noted that only 8 (eight) tables have been reserved, and that at least 12 (twelve) would be needed to ensure that the luncheon be a financial success. Two more members came forward to reserve tables during the discussion.

NEW BUSINESS:

1. A discussion was held regarding the possibility of making **Water's Edge** the permanent meeting place. Vicky spoke with the activities director and was told we could. **Motion:** Barbara Layton moved that we make the change and pay a fee of \$50 per month rent. The motion was seconded by Mary Francis and passed.

2. The slate of officers for 2013 was presented. They are: **President**, Suzi Mills, 1st **Vice President**, Michelle Mueller, 2nd **Vice President**, LaMoyne Meek, **Secretary**, Mary Francis and **Treasurer**, Deanna Spence. Hearing no nominations from the floor, Marge Pollard made a motion to accept the slate, seconded by Barbara Fowler. Passed .

The meeting was adjourned at 10:30 after "Show and Tell.

The program for the day was a class in "Doodling" by Gail Kautz.

Respectfully submitted, LaMoyne Meek, Secretary





Scharff Brushes

50% off

Chapter Fund Raiser

Ok, so this is how it works. When you buy your brushes from Scharff, you are purchasing them at a reduced rate of 50% off retail prices. Our Chapter earns a 10% profit on each order. Now how great is that!!! Your orders will be individually wrapped with an additional 50 cents added for shipping.

There's no better time than now to get the brushes you need and want and earn your Chapter a few extra dollars at the same time. There is no other way our members can get these brushes at **half price** AND get them shipped!

For more information see

Vicki Alley

863-632-1472

vicki@decoratingdesigns4u

QUALITY CUSTOM WOOD CUTTING FOR THE DECORATIVE ARTIST DISCOUNT PRICES FOR CHAPTER MEMBERS

I can custom cut any wood item for you from any pattern.

If you don't have a pattern, but have an idea, let me know and I can make it for you. All items can be made from solid Pine, Baltic Birch plywood or Ultra Light MDF board. Any size 1/8" to 1-1/2". Every wood item is free from knots and any defects.*

Finished - Sanded - Ready to Paint or Stain

**Ultra Light MDF board is my recommendation because it has an ultra smooth surface, no knots or wood grain, does not warp, sands easily if needed and is less expensive than wood.*

For more information please contact Tom Mingoello

WOOD CREATIONS

Palm Harbor, Florida

Cell: 727-455-5539 Fax: 727-771-6758 Home: 727-785-6746

Tom Mingoello

CRDA Honorary Chapter Member

woodbytom@aol.com